



Digital Set-Top Boxes

2017

VESTEL





Company Profile
02-03



Global Operations
04-05



R&D Capabilities
06



Technology & Partners
07



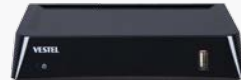
Operational Partnerships
08



Satellite
09-18



Terrestrial
19-24



Cable
25-26



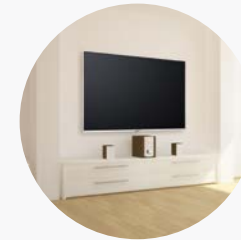
Combo
27-28



IPTV&OTT
29-34



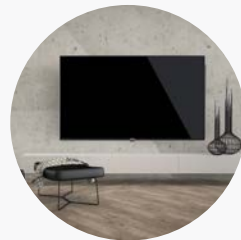
Media Capability
35-38



Available Cabinets
39-40



Model Line-up
41-43



Specifications
44-48



Addresses
49



Company Profile

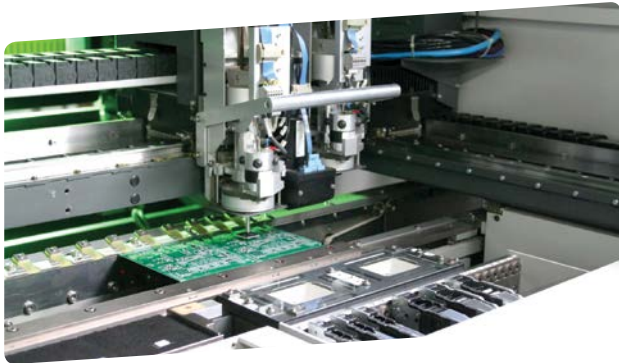
Vestel City, which comprises nine plants located in Manisa, is amongst the biggest industrial complexes of the world.

As one of the leading enterprises in Turkey, Vestel is a major player in consumer electronics, mobile technologies, household appliances, professional displays and LED lighting with renowned products, including television sets, educational, hospitality and digital signage solutions, digital set-top boxes, tablet PCs, smart phones, refrigerators, washing machines, cooking appliances, dishwashers, air conditioners, and water heaters

Leading the European market in digital products, Vestel has established agreements with the major digital television operators in Europe for the production of digital television and set-top boxes.

Total productive maintenance and the six sigma approach implemented throughout the manufacturing process improve efficiency and productivity in all areas, making Vestel a world-class manufacturer.





With an annual manufacturing capacity of 18 million television sets, Vestel controls 20 percent of the European market for flat panel televisions.

In 2013, the company started built-in module system production based on assembling TVs on a glass cell, and installed robotic lines for the automation of the LED TV assembly. The complete system, named as cell-in tv-out, helps the company to increase efficiency and product quality by all means.

By investing more than 50 million US dollars in LCD panel production over the last few years, Vestel is proud to be the first company in Europe to realise bonding, backlight and module assembly.

Keeping up with the fast developing mobile technologies and interactivity of different devices, Vestel launched tablet PCs, smart phones and developed the Smart Center technology allowing interaction of Vestel Smart TVs with mobile devices.

R&D facilities located in Manisa, Istanbul, the UK, and China

employ the highest caliber engineers to develop hardware and software solutions that provide clients with world-class quality products.

The total R&D investment in 2014 exceeded 90 million US dollars.

Vestel has proven its success in product design by receiving the most prestigious design awards every year from well-known industrial design organisations for a variety of products

Vestel Trade, the company responsible for the marketing and sales of Vestel products overseas, exports 73% percent of its production under leading Japanese and European brands to 152 countries.

Achieving export sales of 8.3 million units of electronics and 4.8 million units of household appliances, the company is proud to account for 91 percent of the television and 28 percent of the white goods exports in Turkey.

 Global Operations



Manufacturing & Assembly Plants

LED TV, HD, IP/OTT, PVR Set-top Boxes – Manisa, Turkey

Professional Displays, Tablet PC, Smart Phone, LED lighting – Manisa Turkey

Refrigerator, Washing Machine, Dishwasher, Cooking Appliances, Air Conditioner, Water Heater Manisa, Turkey

Marketing & Sales Companies

Vestel Trade, Turkey

Vestel France, France

Vestel Germany, Germany

Vestel UK, The UK

Vestel Iberia, Spain

Gruppo Industriale Vestit, Italy

Vestel Benelux, The Netherlands

Vestel CIS Ltd, Russia

Vestel Electronica, Romania

Vestel Scandinavia, Finland

Vestfrost Household, Denmark

Vestel Central Asia, Kazakhstan

R&D Centers

Manisa, Turkey

Istanbul, Turkey

Bristol, UK

Shanghai, China



Digital TV industry has been advancing rapidly with the technological developments. New design methodologies, feature sets and technical achievements continuously introduce wide range of solutions and business models for the Digital TV market. Therefore Vestel's mission has always been about creating innovative and differentiable products. In this respect Vestel's focus is always on new product design and development.

Well aware that the sustainability of its global competitiveness mainly depends on its success in closely monitoring and rapidly implementing the latest technological developments, Vestel has placed R&D operations at the heart of its production strategy. R&D facilities located in Manisa, İstanbul, the UK, China, and Taiwan employ more than 500 engineers to develop hardware and software solutions that provide clients with world-class quality products. The total R&D investment in 2013 exceeded 70 million US dollars.

Vestel conducts its R&D activities on a project basis through in five different groups:

- Hardware Design;
- Software Development;
- Industrial and Mechanical Design;
- Testing and Approval;
- Compliance Certification for International Directives and Standards.

Vestel R&D monitors all cost items, not only components, but also design and production, in a meticulous way in order to stay ahead of the competition. Through its successfully implemented "Design for Manufacturing" program, the Company undertakes production-centered design and development to minimize production costs.

CA TECHNOLOGIES & PARTNERS



SOFTWARE TECHNOLOGIES & PARTNERS



OPERATOR PARTNERSHIPS



Satellite





4K/2K DVB-S2 HEVC/H.265 powered by Android TV™ **S7252**

Features

- 4K/2K HEVC (High Efficiency Video Codec) / H.265 Decoding
- Android 6.0 Marshmallow Release
- Intelligent Content Search, Recommendation Engine
- Optimized App & Gaming support for TV
- Built-in 802.11ac Wi-Fi with Bluetooth
- DVB-S/S2 Middleware Integrated
- CI+, PVR Ready
- HDMI 2.0 with HDCP 2.2, up to 4K/2K p60 resolution support
- ErP Regulation compliant eco-design; Standby < 0.5W

Available Cabinets

7XX



4K/2K DVB-S2 HEVC/H.265 S7252

Features

- 4K/2K HEVC (High Efficiency Video Codec) / H.265 Decoding
- Built-in 802.11ac Wi-Fi with Bluetooth (optional)
- DLNA, HBB TV, Portal Application (opt)
- Opera web browser
- CI+, PVR Ready
- Enhanced Media Player with wide range of codec support
- SW Update via OAD (Over Air Download - DVB-SSU compliant) or USB
- HDMI 2.0 with HDCP 2.2, up to 4K/2K p60 resolution support
- ErP Regulation compliant eco-design; Standby < 0.5W

Available Cabinets

7XX



DVB-S2





HD MPEG-4 DVB-S2 FREESAT DTR S7850

Features

- HD/SD MPEG2 / MPEG4 (H.264)
- Dual DVB-S2 Tuner
- 500GB / 1TB Built-in HDD
- Freesat Freetime EPG Engine
- SW Update via OAD (DVB-SSU compliant) or USB
- Freesat+ HD certified for UK market
- HDMI 1.4 with HDCP 1.2, up to 1080p resolution support
- ErP Regulation compliant eco-design; Standby < 0.5W

Available Cabinets

7XX



HD MPEG-4 DVB-S2 IRDETO S7820

Features

- HD/SD MPEG2 / MPEG4 (H.264)
- Embedded Irdeto CAS
- DRM Support (Irdeto DRM & MS Playready)
- Opera Browser for HBB TV & Portal applications (opt)
- CI+ / DLNA / Wi-Fi (opt)
- HDMI 1.4 with HDCP 1.2, up to 1080p resolution support
- Enhanced Media Player with wide range of codec support
- Secure SW Update via OAD (DVB-SSU compliant) or USB
- ErP Regulation compliant eco-design; Standby < 0.5W

Available Cabinets

2XX



DVB-S2



irdeto

Digiturk

HbbTV

DLNA

CI+



Microsoft PlayReady





HD MPEG-4 DVB-S2 NAGRA S7715

Features

- HD/SD - MPEG2 / MPEG4 (H.264)
- Embedded Nagra CAS
- Nagra PRM
- Opera Browser for HBB TV & Portal applications
- HD+ Replay
- CI+ / DLNA / Wi-Fi (opt)
- HDMI 1.4 with HDCP 1.2, up to 1080p resolution support
- PVR Ready & Timeshift (opt)
- Secure SW Update via OAD (DVB-SSU compliant) or USB
- Enhanced Media Player with wide range of codec support
- Unicable support (opt)
- ErP Regulation compliant eco-design; Standby < 0.5W

Available Cabinets

5XX



HD MPEG-4 DVB-S2 CISCO TECHNOLOGY S7560

Features

- HD/SD - MPEG2 / MPEG4 (H.264)
- Embedded CISCO TECHNOLOGY CAS
- CISCO Media Highway Middleware
- PVR Ready (opt)
- Secure SW Update via OAD (DVB-SSU compliant)
- D-Smart certified / D-Smart First Time Installation
- HDMI 1.4 with HDCP 1.2, up to 1080p resolution support
- ErP Regulation compliant eco-design; Standby < 0.5W

Available Cabinets

5XX





HD MPEG-4 DVB-S2 VIACCESS S9640/45

Features

- HD/SD - MPEG2 / MPEG4 (H.264)
- Embedded Viaccess 5.0 CAS
- TNT SAT / FRANSAT / France Televisions
- PVR Ready & Media Browser over USB 2.0
- Secure SW Update via OAD (DVB-SSU compliant) or USB
- Access to free satellite digital TV
- HDMI 1.4 with HDCP 1.2, up to 1080p resolution support
- ErP Regulation compliant eco-design; Standby < 0.5W

Available Cabinets

2XX



HD MPEG-4 DVB-S2 CONAX S7585

Features

- HD/SD MPEG2 / MPEG4 (H.264)
- Embedded Conax CAS with Chipset Pairing
- HDMI 1.4 with HDCP 1.2, up to 1080p resolution support
- Enhanced Media Player with wide range of codec support
- Secure SW Update via OAD (DVB-SSU compliant) or USB
- ErP Regulation compliant eco-design; Standby < 0.5W

Available Cabinets

5XX





DVB-S2

Full HD
1080

ECO DESIGN

HD MPEG-4 DVB-S2 FTA **S9200/05**

Features

- HD/SD MPEG2 / MPEG4 (H.264)
- Media browser over USB
- PVR Ready
- SW Update via OAD (DVB-SSU compliant) or USB
- HDMI 1.3a with HDCP 1.2, up to 1080p resolution support
- ErP Regulation compliant eco-design; Standby < 0.5W

Available Cabinets

2XX, 15XX

Terrestrial





HD MPEG-4 DVB-T2 Freeview Play T9110

Features

- HD/SD MPEG2 / MPEG4 (H.264)
- Media browser over USB
- PVR Ready
- SW Update via OAD (DVB-SSU compliant) or USB
- HDMI 1.4a with HDCP 1.2, up to 1080p resolution support
- Built-in 802.11n Wi-Fi
- ErP Regulation compliant eco-design; Standby < 0.5W

Available Cabinets

2XX



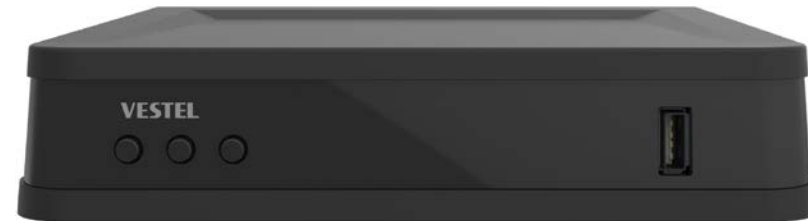
HD MPEG-4 DVB-T FTA T9210

Features

- HD/SD MPEG2 / MPEG4 (H.264)
- Media browser over USB
- MinDig certified for Hungarian market
- PVR Ready
- SW Update via OAD (DVB-SSU compliant) or USB
- HDMI 1.3a with HDCP 1.2, up to 1080p resolution support
- ErP Regulation compliant eco-design; Standby < 0.5W

Available Cabinets

2XX





DVB-T2

Full HD
1080

ECO DESIGN

HD MPEG-4 DVB-T2 FTA T9280

Features

HD/SD MPEG2 / MPEG4 (H.264)

Media browser over USB

PVR Ready

SW Update via OAD (DVB-SSU compliant) or USB

HDMI 1.3a with HDCP 1.2, up to 1080p resolution support

ErP Regulation compliant eco-design; Standby < 0.5W

Available Cabinets

2XX

HD HEVC DVB-T2 IRDETO T9820

Features

- Full HD HEVC Decoding (H.265)
- Embedded Cardless Irdeto CA
- Media browser over USB
- PVR Ready (optional)
- SW Update via OAD (DVB-SSU compliant) or USB
- HDMI 1.4 with HDCP 1.2, up to 1080p resolution support
- ErP Regulation compliant eco-design; Standby < 0.5W

Available Cabinets

2XX





HD MPEG-4 DVB-T2 FTA DTR T7675

Features

- HD/SD MPEG2 / MPEG4 (H.264)
- Dual DVB-T2 Tuner
- 500GB/1TB Built-in HDD
- Enhanced Media Player with wide range of codec support
- SW Update via OAD (DVB-SSU compliant) or USB
- Freeview certified for UK market
- BBC iPlayer certified for UK market
- Audio description for visually impaired
- HDMI 1.4 with HDCP 1.2, up to 1080p resolution support
- ErP Regulation compliant eco-design; Standby < 0.5W

Available Cabinets

30XX



Cable





HD MPEG-4 DVB-C FTA C9210

Features

HD/SD MPEG2 / MPEG4 (H.264)

Media browser over USB

PVR Ready

Over Cable Download (DVB-SSU compliant) or USB SW update

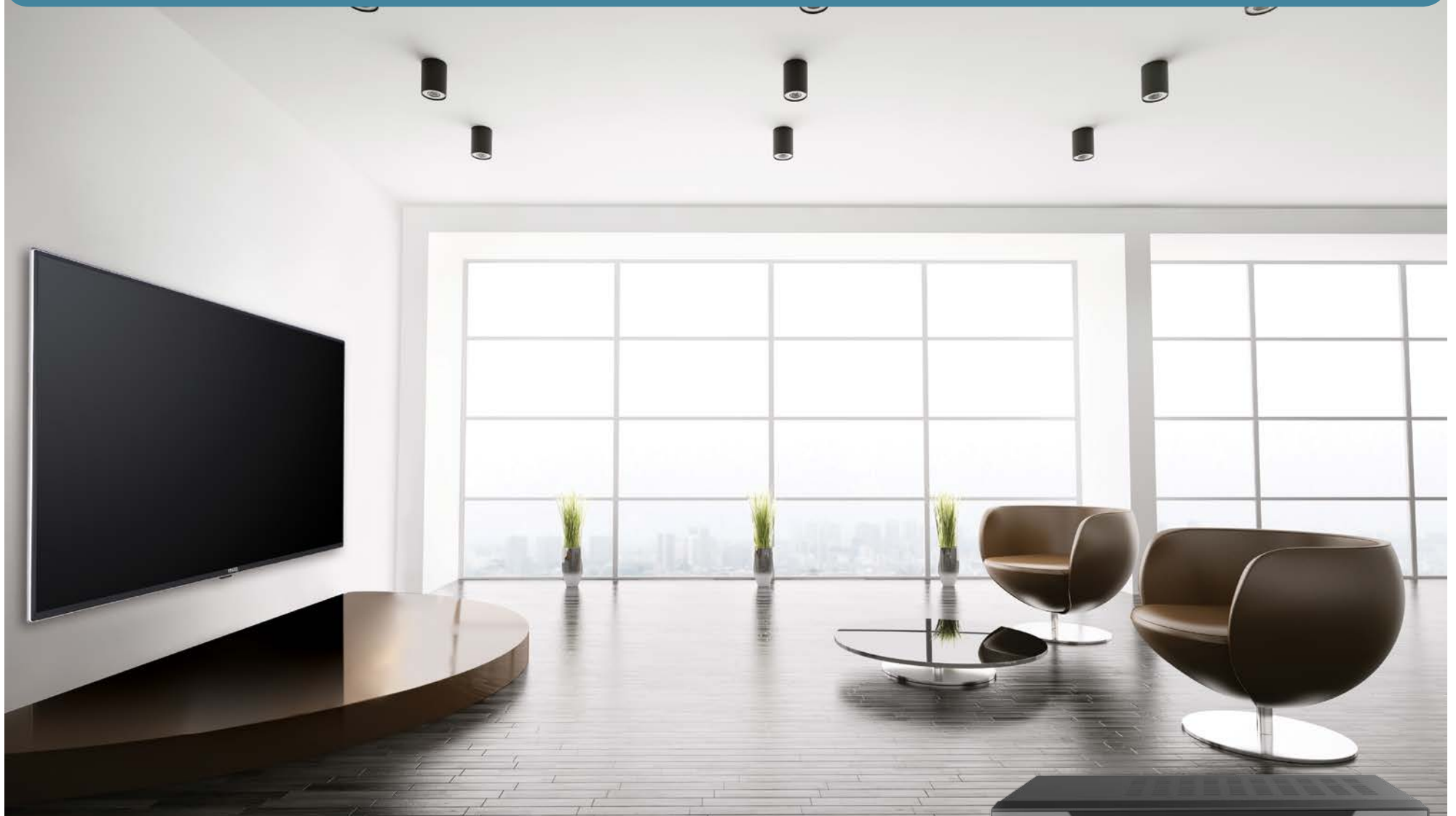
HDMI 1.3a with HDCP 1.2, up to 1080p resolution support

ErP Regulation compliant eco-design; Standby < 0.5W

Available Cabinets

2XX

Combo





HD MPEG-4 DVB-S2/T/T2/C CI+ TSC7840

Features

- HD/SD - MPEG2 / MPEG4 (H.264)
- DVB-S2 & T & T2 & C Multi Tuner Options
- HBB TV 1.5 & Portal applications
- CI+ 1.3 / DLNA / Wi-Fi (opt)
- HDMI 1.4 with HDCP 1.2, up to 1080p resolution support
- PVR Ready & Timeshift
- SW Update via OAD (DVB-SSU compliant) or USB
- Enhanced Media Player with wide range of codec support
- Single Cable Distribution Support
- Miracast support
- ErP Regulation compliant eco-design; Standby < 0.5W

Available Cabinets

5XX

DVB-T2/C/S2

Full HD
1080

CI+

HbbTV

DLNA

VESTEL
smart
CENTER

ECO DESIGN

IPTV & OTT





4K/2K HEVC/H.265 powered by Android TV™ **IP7252**

Features

- 4K/2K HEVC (High Efficiency Video Codec) / H.265 Decoding
- Android 6.0 Marshmallow Release
- Intelligent Content Search, Recommendation Engine
- Optimized App & Gaming support for TV
- Built-in 802.11ac Wi-Fi with Bluetooth (optional)
- HDMI 2.0 with HDCP 2.2, up to 4K/2K p60 resolution support
- ErP Regulation compliant eco-design; Standby < 0.5W

Available Cabinets

30XX

DVB-T2/C/S2



androidtv



4K/2K HEVC/H.265 Media Player IP7252

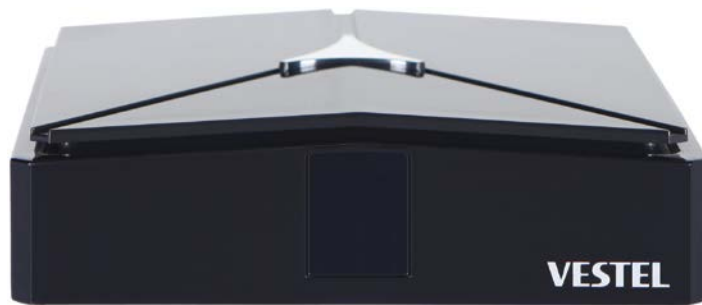
Features

- 4K/2K HEVC (High Efficiency Video Codec) / H.265 Decoding
- 500GB/1TB Built-in HDD option
- Built-in 802.11ac Wi-Fi with Bluetooth (optional)
- DLNA, HBB TV, Portal Application (opt)
- Opera web browser
- PVR Ready
- Enhanced Media Player with wide range of codec support
- SW Update via IP (FTP) or USB
- HDMI 2.0 with HDCP 2.2, up to 4K/2K p60 resolution support
- ErP Regulation compliant eco-design; Standby < 0.5W

Available Cabinets

30XX





HD HEVC/H.265 OTT IP7230

Features

- Full HD HEVC (High Efficiency Video Codec) / H.265 Decoding
- Microsoft Playready, Verimatrix DRM
- Opera Browser with HTML5 support
- Smoothstreaming & HLS support
- Optional DVB-S2/T/T2/C tuner support
- Companion Device Support (iOS & Android Tablets & Smartphones)
- Vestel SDK for 3rd party app development over HTML
 - o HbbTV SDK API
 - o Vestel STB extension SDK API
 - o PVR Ready & Media Browser
 - o Remote control
- HDMI 1.4 with HDCP 1.2, up to 1080p resolution support
- ErP Regulation compliant eco-design; Standby < 0.5W

Available Cabinets

20XX



HD MPEG-4 DVB-IPTV BEENIUS IP7630

Features

- HD/SD - MPEG2 / MPEG4 (H.264)
- Embedded Verimatrix CAS
- Ekioh SVG Engine and Browser Plug-in
- VOD: Kasenna, Edgeware, Bitband, Anevia
- HLS
- Beesmart Cloud
- PIP support (HD – SD)
- PVR Ready & Timeshift (opt)
- Companion Device Support (iOS & Android Tablets & Smartphones)
- HDMI 1.4 with HDCP 1.2, up to 1080p resolution support
- ErP Regulation compliant eco-design; Standby < 0.5W

Available Cabinets

2XX, 3XX, 5XX



DVB IPTV



Beenius





HD MPEG-4 OTT IP7600/15

Features

- HD/SD - MPEG2 / MPEG4 (H.264)
- Microsoft Playready, Verimatrix DRM
- Opera Browser with HTML5 support
- Smoothstreaming & HLS support
- Optional DVB-S2/T/T2/C tuner support
- Companion Device Support (iOS & Android Tablets & Smartphones)
- Vestel SDK for 3rd party app development over HTML
 - o HbbTV SDK API
 - o Vestel STB extension SDK API
 - o PVR Ready & Media Browser
 - o Remote control
- HDMI 1.4 with HDCP 1.2, up to 1080p resolution support
- ErP Regulation compliant eco-design; Standby < 0.5W

Available Cabinets

20XX



Media Capability



CODEC INFO			BROADCOM				MSTAR	
Source	Type	File Extension	S/IP 7252	S/T/C 75XX	S/T/IP 76XX	S/T/C 78XX	S 96XX	T / C 9XXX
VIDEO	AVI	.avi	•	•	•	•	•	•
		.divx	o	o	o	o	o	o
		.xvid	•	•	•	•	•	•
	Matroska	.mkv	•	•	•	•	•	•
		.webm	o	o	o	o	o	o
	MP4	.mp4	•	•	•	•	•	•
		.m4v	•	•	•	•	o	o
		.mp4v	•	o	•	•	o	o
		.mpv4	•	o	•	•	o	o
	Ogg	.ogm	•	o	•	•	o	o
		.ogv	•	o	•	•	o	o
	VP9	.vp9	•	o	o	o	o	o
	HEVC	.h265	•	o	o	o	o	o
		.hevc	•	o	o	o	o	o
	Flash Video	.flv	o	o	o	o	o	o
	MPEG	.mpeg	•	•	•	•	•	•
		.mpg	•	•	•	•	•	•
		.mp2v	•	o	•	•	o	o
		.mpv2	•	o	•	•	o	o
		.m1v	•	o	•	•	o	o
		.m2v	•	o	•	•	o	o
		.m2p	•	o	•	•	o	o
		.mpe	•	o	•	•	o	o
	MPEG TS	.ts	•	•	•	•	•	•
		.m2ts	•	o	•	•	•	•
		.mts	•	o	•	•	•	•
		.m2ts	•	o	•	•	•	•
		.tps	•	o	•	•	o	o
	QuickTime	.hdmov	o	o	o	o	o	o

CODEC INFO			BROADCOM				MSTAR	
Source	Type	File Extension	S/IP 7252	S/T/C 75XX	S/T/IP 76XX	S/T/C 78XX	S 96XX	T / C 9XXX
VIDEO	QuickTime	.mov	o	o	o	o	o	o
	3GP	.3gp	o	o	o	o	o	o
		.3gpp	o	o	o	o	o	o
	Windows Media	.wmv	•	o	•	•	o	o
		.asf	•	o	•	•	o	o
	DVD File	.ifo	o	o	o	o	o	o
		.vob	•	o	•	•	o	o
	Blu-ray Playlist File	.mpls	o	o	o	o	o	o
	RealMedia	.rm	o	o	o	o	o	o
		.rmvb	o	o	o	o	o	o
AUDIO	MP3	.mp3	•	•	•	•	•	•
	Ogg	.ogg	•	o	•	•	o	o
		.oga	•	o	•	•	o	o
	Matroska	.mka	•	o	•	•	o	o
	MPEG4 Audio	.m4a	•	o	•	•	o	o
		.aac	•	o	•	•	•	•
	Windows Media	.wma	•	o	•	•	o	o
	AC3	.ac3	•	o	•	•	•	•
	DTS	.dts	o	o	o	o	o	o
	Real Audio	.ra	o	o	o	o	o	o
	Playlist File Extensions	.m3u	o	o	o	o	o	o
		.pls	o	o	o	o	o	o
		.m3u8	o	o	o	o	o	o

MEDIA CAPABILITY

CODEC INFO			BROADCOM				MSTAR	
Source	Type	File Extension	S/IP 7252	S/T/C 75XX	S/T/IP 76XX	S/T/C 78XX	S 96XX	T / C 9XXX
TEXT	Subtitle	.srt	•	•	•	•	•	•
		.ssa	•	o	•	•	•	•
		.sub	•	•	•	•	•	•
		.smi	•	o	•	•	•	•
		.ass	•	o	•	•	•	•
		.txt	•	o	•	•	•	•
PICTURE	Bitmap	.bmp	•	o	•	•	•	•
		.dib	•	o	•	•	o	o
	JPEG	.jpg	•	•	•	•	•	•
		.jpeg	•	•	•	•	•	•
		.jpe	•	o	•	•	o	o
		.jif	•	o	•	•	o	o
	GIF	.gif	•	o	•	•	o	o
	TIFF	.tif	•	o	•	•	o	o
		.tiff	•	o	•	•	o	o
	PNG	.png	•	o	•	•	o	o
	ICO	.ico	•	o	•	•	o	o
	Windows Media	.hdp	•	o	•	•	o	o
		.jxr	•	o	•	•	o	o
		.wdp	•	o	•	•	o	o
.wmp		•	o	•	•	o	o	

Available Cabinets



AVAILABLE CABINETS

Set-top Box Projects	Available Cabinets				
	2XX	5XX	7XX	20XX	30XX
DVB-S					
4K/2K HEVC DVB-S2 POWERED by ANDROID TV			•		
4K/2K HEVC DVB-S2 CI+ CONNECTED (S7252)			•		
HD MPEG4 DVB-S2 PVR FREESAT (S7850)			•		
HD MPEG4 DVB-S2 IRDETO (S7820)	•				
HD MPEG4 DVB-S2 NAGRA (S7715)		•			
HD MPEG4 DVB-S2 CISCO (S7560)		•			
HD MPEG4 DVB-S/S2 VIACCESS (S9640/45)	•				
HD MPEG4 DVB-S2 CONAX (S7585)		•			
HD MPEG4 DVB-S2 CI+ CONNECTED (S7840)		•			
HD MPEG4 DVB-S2 FTA (S9200/05)	•				
DVB-T					
HD MPEG4 DVB-T2 FREEVIEW PLAY (T9110)	•				
HD MPEG4 DVB-T2 FTA (T9280)	•				
HD MPEG4 DVB-T FTA (T9210)	•				
HD MPEG4 DVB-T2 IRDETO (T9820)	•				
HD MPEG4 DVB-T2 FTA DTR (T7675)					•
DVB-C					
HD MPEG4 DVB-C FTA (C9210)	•				
COMBO					
HD MPEG4 DVB-S2/T2/C CI+ CONNECTED (TSC7800)		•			
DVB-IPTV & OTT					
4K/2K HEVC OTT MEDIA PLAYER (IP7252)					•
HD HEVC OTT (IP7230)					•
HD MPEG4 DVB-IPTV BEESMART (IP7630)				•	
HD MPEG4 OTT (IP7600)	•	•			
HD MPEG4 OTT (IP7615)				•	

Model Line-up



MODEL LINE-UP

2XX

5XX



DVB 245



DVB 264



DVB 500



DVB 520



DVB 525



DVB 250



DVB 266



DVB 515



DVB 535



DVB 540



DVB 255



DVB 268



DVB 530



DVB 550



DVB 260



DVB 545



DVB 510



DVB 262



DVB 505

7XX



DVB 700



DVB 705



DVB 710

20XX



DVB 2015



DVB 2025

30XX



DVB 3000



DVB 3010



DVB 3015

Specifications



DVB-S TECHNICAL SPECIFICATIONS											
Main Features	Sub Features	S7252	S7850	S7820	S7585	S7560	S7840	S7715	S9200	S9640	S9645
Tuner	Broadcast System	DVB-S/S2	DVB-S/S2	DVB-S/S2	DVB-S/S2	DVB-S/S2	DVB-S/S2	DVB-S/S2	DVB-S/S2	DVB-S/S2	DVB-S/S2
	Input Frequency Range (MHz)	950-2150	950-2150	950-2150	950-2150	950-2150	950-2150	950-2150	950-2150	950-2150	950-2150
	Input Signal Level (dBm)	Min -75, Max -25	Min -75, Max -25	Min -75, Max -25	Min -75, Max -25	Min -75, Max -25	Min -75, Max -25	Min -75, Max -25	Min -75, Max -25	Min -75, Max -25	Min -75, Max -25
	LNB Power	Max 300mA	Max 300mA	Max 300mA	Max 300mA	Max 300mA	Max 300mA	Max 300mA	Max 300mA	Max 300mA	Max 300mA
	DiseqC	DiseqC 1.0	DiseqC 1.0	DiseqC 1.0	DiseqC 1.0	DiseqC 1.0	DiseqC 1.0	DiseqC 1.0	DiseqC 1.0	DiseqC 1.0	DiseqC 1.0
	Single Cable Distribution	-	-	•	•	-	•	•	-	-	-
CA System	RF Loophthrough	-	-	-	-	-	-	-	-	-	-
	Type	CI+	FTA	Irdeto Advanced Secure	Conax (Chipset Pairing)	Cisco	CI+	Nagra	FTA	Viaccess	Viaccess
Video	Operator	Generic	Freesat	Digiturk / Skylink / ORF	Generic	D-Smart	Generic	Sentech / HD+	-	Fransat	TNTSat
	HDMI	HDMI 2.0 with HDCP 2.2	HDMI 1.4 with HDCP 1.2	HDMI 1.4 with HDCP 1.2	HDMI 1.4 with HDCP 1.2	HDMI 1.4 with HDCP 1.2	HDMI 1.4 with HDCP 1.2	HDMI 1.4 with HDCP 1.2	HDMI 1.3 with HDCP 1.2	HDMI 1.4 with HDCP 1.2	HDMI 1.4 with HDCP 1.2
Audio	Scart	-	-	-	•	•	•	•	•	-	-
	CVBS	3.5mm A/V Jack	3.5mm A/V Jack	3.5mm A/V Jack	via Scart	via Scart	via Scart	via Scart	via Scart	•	•
	RGB	-	-	-	via Scart	via Scart	via Scart	via Scart	via Scart	-	-
Features	Dolby Digital	•	•	•	•	•	•	•	•	•	•
	Dolby Digital Plus	•	•	•	•	•	•	•	•	•	•
	PCM	•	•	•	•	•	•	•	•	•	•
Interfaces	4K/2K/HD/SD	4K/2K HEVC / H.265	HD MPEG4 / H.264	HD MPEG4 / H.264	HD MPEG4 / H.264	HD MPEG4 / H.264	HD MPEG4 / H.264	HD MPEG4 / H.264	HD MPEG4 / H.264	HD MPEG4 / H.264	HD MPEG4 / H.264
	USB 2.0 / 3.0	USB 3.0	USB 2.0	USB 2.0	USB 2.0	USB 2.0	USB 2.0	USB 2.0	USB 2.0	USB 2.0	USB 2.0
	PVR Ready	-	-	Optional	Optional	Optional	•	Optional	•	•	•
	HBB TV	Optional	Optional	Optional	-	-	•	•	-	-	-
	DLNA	Optional	Optional	Optional	-	-	•	•	-	-	-
	Portal	Optional	Optional	Optional	-	-	•	•	-	-	-
	Wi-Fi	Optional	Optional	Optional	-	-	Optional	Optional	-	-	-
	HDD	-	500 GB, 1 TB	-	-	-	-	-	-	-	-
Power	RF In	•	2 x F Type	•	•	•	•	•	•	•	•
	RF Out	-	-	-	-	-	-	-	-	-	-
	Scart	-	-	•	•	•	Optional	•	Optional	-	-
	HDMI	•	•	•	•	•	•	•	•	•	•
	Analog Audio Output	3.5mm A/V Jack	3.5mm A/V Jack	3.5mm A/V Jack	Left & Right RCA Jack	Left & Right RCA Jack	Left & Right RCA Jack	Left & Right RCA Jack	-	3.5mm A/V Jack	3.5mm A/V Jack
	Digital Audio Output	S/P DIF	S/P DIF	S/P DIF	S/P DIF	S/P DIF	S/P DIF	S/P DIF	S/P DIF	S/P DIF	S/P DIF
	USB 2.0 / 3.0	Front / Rear	Front / Rear	Front / Rear	Front / Rear	Front / Rear	Front / Rear	Front / Rear	Front	Front / Rear	Front / Rear
	Ethernet	•	•	•	•	•	•	•	-	-	-
	CI Slot	•	Optional	-	Optional	-	•	Optional	-	-	-
	Smartcard Reader	-	-	•	•	•	-	•	-	•	•
Accessories	Power Input	DC in	DC in	DC in	DC in	DC in	DC in	DC in	Mains	DC in	DC in
	Operating Conditions	220-240V 50/60Hz	220-240V 50/60Hz	220-240V 50/60Hz	220-240V 50/60Hz	220-240V 50/60Hz	220-240V 50/60Hz	220-240V 50/60Hz	220-240V 50/60Hz	220-240V 50/60Hz	220-240V 50/60Hz
	Consumption (Standby)	<0.5W	<0.5W	<0.5W	<0.5W	<0.5W	<0.5W	<0.5W	<0.5W	<0.5W	<0.5W
Dimensions	Consumption (Max)	38W	38W	17W	17W	20W	19W	19W	6W	16W	16W
	User Manual	•	•	•	•	•	•	•	•	•	•
	Quick Start Guide	Optional	Optional	Optional	Optional	Optional	Optional	Optional	Optional	Optional	Optional
	Remote Control	RC39100	Freesat	RC4810	RC4810	RC4810	RC4810	RC2712, RC4810	RC4810	RC2712, RC4810	RC2712, RC4810
	Batteries	2xAAA	2xAAA	2xAAA	2xAAA	2xAAA	2xAAA	2xAAA	2xAAA	2xAAA	2xAAA
	External PSU	12V/4A	12V/4A	12V/2A	12V/2A	12V/2A	12V/2A	12V/2A	12V/1.5A	12V/2A	12V/2A
Dimensions	Smartcard by Operator	-	-	-	-	-	-	•	-	•	•
	AV Cable	Optional HDMI/Scart Cable	Optional HDMI/Scart Cable	Optional HDMI/Scart Cable	Optional HDMI/Scart Cable	Optional HDMI/Scart Cable	Optional HDMI/Scart Cable	Optional HDMI/Scart Cable	Optional HDMI/Scart Cable	Optional HDMI/Scart Cable	Optional HDMI/Scart Cable
	Cabinet	7XX Series	7XX Series	2XX Series	5XX Series	5XX Series	5XX Series	5XX Series	2XX Series	2XX Series	2XX Series
Dimensions	Set (WxDxH) mm	275x200x47	275x200x47	175x142x42	231x137x43	231x137x43	231x137x43	231x137x43	175x142x42	175x142x42	175x142x42
	Weight (Kg)	1	1.5	0.5	0.7	0.7	0.7	0.7	0.5	0.5	0.5

SPECIFICATIONS

DVB-T TECHNICAL SPECIFICATIONS						
Main Features	Sub Feature	T7675	T9110	T9200	T9210	T9820
Tuner	Broadcast System	DVB-T2	DVB-T2	DVB-T2	DVB-T	DVB-T2
	Input Frequency Range (MHz)	174-862	44-1002	44-1002	44-1002	44-1002
	Input Signal Level (dBm)	Min -80, Max -25	Min -80, Max -25	Min -80, Max -25	Min -80, Max -25	Min -80, Max -25
	Twin Tuner	•	-	-	-	-
	Active Antenna	•	Optional	Optional	Optional	Optional
	RF Loophthrough	•	•	-	-	-
CA System	Type	-	FTA	FTA	FTA	Irdeto
	Operator	-	-	-	-	Freenet
Video	HDMI	HDMI 1.4 with HDCP 1.2	HDMI 1.4 with HDCP 1.2	HDMI 1.3 with HDCP 1.2	HDMI 1.3 with HDCP 1.2	HDMI 1.4 with HDCP 1.2
	Scart	-	-	Optional	Optional	-
	CVBS	•	•	•	•	•
	RGB	-	-	-	-	-
Audio	Dolby Digital	•	•	•	•	•
	Dolby Digital Plus	•	•	•	•	•
	PCM	•	•	•	•	•
Features	4K/2K/HD/SD	HD MPEG4 / H.264	HD MPEG4 / H.264	HD MPEG4 / H.264	HD MPEG4 / H.264	HD HEVC / H.265
	USB 2.0 / 3.0	•	•	•	•	•
	PVR Ready	-	•	•	•	-
	MHEG5	•	-	-	-	-
	HBB TV	-	-	-	-	-
	DLNA	Optional	-	-	-	-
	Portal	•	•	-	-	-
	Wi-Fi	Optional	Optional	-	-	-
	HDD	500 GB, 1 TB	-	-	-	-
Interfaces	RF In	•	•	•	•	•
	RF Out	-	-	-	-	-
	Scart	-	-	Optional	Optional	-
	HDMI	•	•	•	•	•
	Analog Audio Output	3.5mm A/V Jack	3.5mm A/V Jack	3.5mm A/V Jack	3.5mm A/V Jack	3.5mm A/V Jack
	Digital Audio Output	S/P DIF	S/P DIF	S/P DIF	S/P DIF	S/P DIF
	USB 2.0 / 3.0	Front / Rear	Front / Rear	Front	Front	Front
	Ethernet	•	•	-	-	-
	CI Slot	-	-	-	-	-
	Smartcard Reader	-	-	-	-	Optional
Power	Power Input	DC in	DC in	DC in	DC in	DC in
	Operating Conditions	220-240V 50/60Hz	220-240V 50/60Hz	220-240V 50/60Hz	220-240V 50/60Hz	220-240V 50/60Hz
	Consumption (Standby)	<0.5W	<0.5W	<0.5W	<0.5W	<0.5W
Accessories	Consumption (Max)	11W	10W	6W	6W	6W
	User Manual	•	•	•	•	•
	Quick Start Guide	Optional	Optional	Optional	Optional	Optional
	Remote Control	RC4810	RC4810	RC4810	RC4810	RC4810
	Batteries	2xAAA	2xAAA	2xAAA	2xAAA	2xAAA
	External PSU	12V/2A	12V/1A	12V/1A	12V/1A	12V/1A
	Smartcard by Operator	-	-	-	-	-
Dimensions	A/V Cable	Optional HDMI/Scart Cable	Optional HDMI/Scart Cable	Optional HDMI/Scart Cable	Optional HDMI/Scart Cable	Optional HDMI/Scart Cable
	Cabinet	30XX	2XX Series	2XX Series	2XX Series	2XX Series
	Set (WxDxH) mm	203x203x45	175x142x42	175x142x42	175x142x42	175x142x42
	Weight (Kg)	1	0.5	0.5	0.5	0.5

DVB-C TECHNICAL SPECIFICATIONS		
Main Feature	Sub Feature	C9210
Tuner	Broadcast System	DVB-C
	Input Frequency Range (MHz)	54-1002
	Input Signal Level (dBm)	Min -77, Max -25
	Dual Tuner	-
	DOCSIS	-
	RF Loophthrough	•
CA System	Type	FTA
	Operator	-
Video	HDMI	HDMI 1.3 with HDCP 1.2
	Scart	•
	CVBS	via Scart
	RGB	via Scart
Audio	Dolby Digital	•
	Dolby Digital Plus	•
	PCM	•
Features	4K/2K/HD/SD	HD MPEG4 / H.264
	USB 2.0 / 3.0	•
	PVR Ready	•
	HBB TV	-
	DLNA	-
	Portal	-
	Wi-Fi	-
	HDD	-
Interfaces	RF In	•
	RF Out	•
	Scart	-
	HDMI	•
	Analog Audio Output	3.5mm A/V Jack
	Digital Audio Output	S/P DIF
	USB 2.0 / 3.0	Front / Rear
	Ethernet	-
	CI Slot	-
	Smartcard Reader	-
Power	Power Input	DC in
	Operating Conditions	220-240V 50/60Hz
	Consumption (Standby)	<0.5W
Accessories	Consumption (Max)	6W
	User Manual	•
	Quick Start Guide	Optional
	Remote Control	RC2712 / RC4500
	Batteries	2xAAA
	External PSU	12V/1.5A
Dimensions	Smartcard by Operator	-
	A/V Cable	Optional HDMI/Scart Cable
	Cabinet	2XX Series
Dimensions	Set (WxDxH) mm	175x142x42
	Weight (Kg)	0.5

DVB COMBO STB TECHNICAL SPECIFICATIONS		
Main Feature	Sub Feature	TSC7840
Tuner	Broadcast System	DVB-T2 + DVB-S2 + DVB-C
	Input Frequency Range (MHz)	*44-1002 (DVB-T2/C)
950-2150 (DVB-S2)*	Input Signal Level (dBm)	Min -80, Max -25
	Twin Tuner	-
	Active Antenna	Optional
	RF Loophthrough	DVB-T2/C only
	Type	CI+
CA System	Operator	Generic
	HDMI	HDMI 1.4 with HDCP 1.2
Video	Scart	•
	CVBS	via Scart
	RGB	via Scart
	Dolby Digital	•
Audio	Dolby Digital Plus	•
	PCM	•
	4K/2K/HD/SD	HD MPEG4 / H.264
Features	USB 2.0 / 3.0	•
	PVR Ready	•
	HBB TV	•
	DLNA	•
	Portal	•
	Wi-Fi	Optional (USB Dongle)
	HDD	-
	RF In	•
Interfaces	RF Out	•
	Scart	•
	HDMI	•
	Analog Audio Output	Left & Right RCA Jack
	Digital Audio Output	S/P DIF
	USB 2.0 / 3.0	Front / Rear
	Ethernet	•
	CI Slot	•
	Smartcard Reader	-
	Power Input	DC in
Power	Operating Conditions	220-240V 50/60Hz
	Consumption (Standby)	<0.5W
	Consumption (Max)	19W
Accessories	User Manual	•
	Quick Start Guide	Optional
	Remote Control	RC2712, RC4810
	Batteries	2xAAA
	External PSU	12V/2A
	Smartcard by Operator	-
Dimensions	A/V Cable	Optional HDMI/Scart Cable
	Cabinet	5XX Series
	Set (WxDxH) mm	231x137x43
Dimensions	Weight (Kg)	0.7

SPECIFICATIONS

DVB IP-OTT TECHNICAL SPECIFICATIONS					
Main Feature	Sub Feature	IP7252	IP7230	IP7615	IP7630
Architecture	Broadcast System	Over the Top (OTT)	Over the Top (OTT)	Over the Top (OTT)	DVB-IPTV
	Input Connection	GigaBit Ethernet	GigaBit Ethernet	100 MBit Ethernet	100 MBit Ethernet
	Middleware	Android TV	Vestel SDK	Vestel SDK	Beesmart
	Browser	Opera	Opera	Opera	Ekioh
	VOD Server Support	•	•	•	•
	Companion Device App	iOS / Android	iOS / Android	iOS / Android	iOS / Android
CA System	Remote Management System	TR69	TR69	TR69	-
	Type	MS Playready , Verimatrix	MS Playready , Verimatrix	MS Playready , Verimatrix	Verimatrix DRM
Video	Operator	Generic	Generic	Generic	Generic
	HDMI	HDMI 2.0 with HDCP 2.2	HDMI 1.4 with HDCP 1.2	HDMI 1.4 with HDCP 1.2	HDMI 1.4 with HDCP 1.2
	Scart	-	-	-	•
	CVBS	3.5mm AV Jack	3.5mm AV Jack	3.5mm AV Jack	via Scart
Audio	RGB	-	-	-	via Scart
	Dolby Digital	•	•	•	•
	Dolby Digital Plus	•	•	•	•
Features	PCM	•	•	•	•
	4K/2K/HD/SD	4K/2K HEVC / H.265	HD HEVC / H.265	HD MPEG4 / H.264	HD MPEG4 / H.264
	USB 2.0 / 3.0	USB 3.0	USB 3.0	USB 2.0	USB 2.0
	PVR Ready	•	•	Optional	Optional
	PIP	-	-	-	Optional
	DLNA	•	•	-	Optional
	Pause TV (Time Shift)	•	•	Optional	Optional
	Wi-Fi	Built-in (802.11 ac) + Bluetooth	Built-in (802.11 ac) + Bluetooth	Optional	-
	Adaptive Streaming	HLS / SmoothStreaming	HLS / SmoothStreaming	HLS / SmoothStreaming	HLS
	HDD	Optional 500GB, 1TB	-	-	-
Interfaces	Scart	-	-	-	•
	HDMI	•	•	•	•
	Analog Audio Output	3.5mm AV Jack	3.5mm AV Jack	-	-
	Digital Audio Output	S/P DIF	S/P DIF	S/P DIF	S/P DIF
	USB 2.0 / 3.0	Rear	Rear	Rear	Front / Rear
Power	Ethernet	•	•	•	•
	Power Input	DC in	DC in	DC in	DC in
	Operating Conditions	220-240V 50/60Hz	220-240V 50/60Hz	220-240V 50/60Hz	220-240V 50/60Hz
Accessories	Consumption (Standby)	<0.5W	<0.5W	<0.5W	<0.5W
	Consumption (Max)	38W	12W	9W	9W
Dimensions	User Manual	•	•	•	•
	Quick Start Guide	Optional	Optional	Optional	Optional
	Remote Control	RC39100	RC4810	RC4810	RC4810
	Batteries	2xAAA	2xAAA	2xAAA	2xAAA
	External PSU	12V/4A	12V/1.5A	12V/1.5A	12V/1.5A
	Ethernet Cable	Optional	Optional	Optional	Optional
Dimensions	AV Cable	Optional HDMI Cable	Optional HDMI Cable	Optional HDMI Cable	Optional HDMI/Scart Cable
	Cabinet	30XX Series	20XX Series	20XX Series	3XX, 5XX Series
	Set (WxDxH) mm	203x203x45	130x130x36	130x130x36	252x144x52
	Weight (Kg)	1	0,3	0,3	0,5

Vestel Trade Co.

Organize Sanayi Bölgesi, 45030 Manisa/Türkiye

Phone: 90 - 236 233 25 82

Fax: 90 - 236 233 25 84

vesteltrade@vestel.com.tr

www.vestel.com.tr

Vestel Benelux B.V.

P.O. Box 29179 3001 GD - Rotterdam / Netherlands

Phone: 31 - 10 235 1000

Fax: 31 - 10 235 1003

info@vestelbenelux.nl

www.vestelbenelux.nl

TOO Vestel Central Asia

Dostyk Avenue, 132 , Office 6, Almaty/Kazakhstan

Phone: 7 - 727 262 83 01

Vestel CIS Ltd.

1-st Graivoronovsky Proezd, No.20 Building 16, 109518,
Moscow /Russia

Phone: 7 - 095 956 8230

Fax: 7 - 095 956 8233

info@vestel.ru

www.vestel.ru

Vestel Electronica

Str Zidarului nr 9-11, Sector 5 Bucuresti, ZIP 051765

Bucharest/Romania

Phone: 40 - 31 425 42 93

Fax: 40 -31 425 42 95

office@vestel.ro

www.vestel.ro

Vestel France S.A.

17 Rue de la Couture-Silic BP 10190-94563 RUNGIS

Cedex/France

Phone: 33 - 1 46 75 00 29

Fax: 33 - 1 41 80 99 31

p.benhamou@vestel-france.fr

Vestel Germany GmbH

Parkring 6 85748 Garching b. München/Germany

Phone: 49 - 89 55295 - 0

Fax: 49 - 89 55295 - 2000

info@vestel-germany.de

www.vestel-germany.de

Gruppo Industriale Vesit SPA

Via polidoro da Caravaggio, 6, 20156 - Milano/Italy

Phone: 39 - 02 842 48577

Fax: 39 - 02 842 48617

info@givesit.it

www.givesit.it

Vestfrost Household

Spangsbjerg Mollevej 100, DK-6705 Esbjerg 0, Denmark

Phone: 45 - 7610 4045

Fax: 45 - 7610 4046

Vestel Iberia

Avda, Partenon, 16-18 Planta 1 Oficina 6, 28042 Madrid/
Spain

Phone: 34 -91 320 63 98

Fax: 34 -91 320 52 58

vestel@vestel.es www.vestel.es

Vestel Poland

Poleczki 33, 02-822 Warszawa, Mazowieckie

Phone: 48 22 2555700

info@vestel-poland.com

Vestel Scandinavia

Postikatu 4, FI-04400 Järvenpää / Finland

Phone: 358 - 46 712 2262

Fax: 358 - (0) 9 251 7 8222

Vestel UK Ltd

Vestel House, Waterside Drive

Langley, Berkshire SL3 6EZ

Phone: 44 - 3330 146 400

info@vestel-uk.com

www.vestel.co.uk

United Technical Services

S.R.O. ul. Seneckâ 16, 91101 Samorin, Slovakia

Phone: 421- 31 590 27 31

Fax: 421- 31 590 27 38

info@uts.sk

www.uts.sk

VESTEL

Organize Sanayi Bölgesi, 45030 Manisa/Türkiye

Phone: 90 - 236 233 25 82 **Fax:** 90 - 236 233 25 84

vesteltrade@vestel.com.tr

www.vestel.com.tr